

# STEELIE®

## PEDESTAL KITS & HOBKNOB™ KIT

### WARNING!—PLEASE READ

**FOR HOBKNOB KIT ONLY: DO NOT** CONNECT TABLET SOCKET TO HOBKNOB HANDLE BEFORE INSTALLING TABLET SOCKET ONTO DEVICE. UNATTACHED, THE TWO ARE VERY DIFFICULT TO SEPARATE.



**STEELIE® USES HIGH PERFORMANCE 3M® VHB® FOAM ADHESIVE. FOR BEST RESULTS, FOLLOW THESE INSTRUCTIONS CAREFULLY.**

**MAGNETIC SOCKET SHOULD BE INSTALLED IN ROOM TEMPERATURE ENVIRONMENT (60°F [16°C] OR HIGHER)**

#### MAGNETIC SOCKET INSTALLATION INSTRUCTIONS:

1. CLEAN THE BACK OF THE DEVICE OR DEVICE CASE WITH THE ENCLOSED ALCOHOL PAD. LET DRY. DO NOT USE HOUSEHOLD CLEANERS.
2. REMOVE THE ADHESIVE BACKING FROM THE MAGNETIC SOCKET THAT CORRESPONDS WITH YOUR KIT.
3. POSITION THE MAGNETIC SOCKET IN THE CENTER OF THE BACK OF DEVICE AND FIRMLY PRESS INTO PLACE.
4. WAIT AT LEAST 1 HOUR FOR ADHESIVE TO BOND BEFORE USING. PLACE DEVICE FACE UP WHILE CURING SO WEIGHT OF DEVICE HELPS SECURE THE BOND.



MAGNETIC TABLET SOCKET



MAGNETIC TABLET SOCKET ADHESIVE BACKING



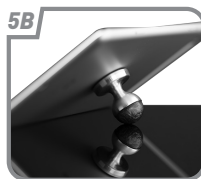
MAGNETIC PHONE SOCKET



MAGNETIC PHONE SOCKET ADHESIVE BACKING



**5A. FOR PEDESTAL KIT:** MATCH THREADING ON BOTTOM OF TABLETOP STAND WITH THREADING IN TABLETOP STAND BASE. TURN GENTLY. PIECES SCREW TOGETHER SMOOTHLY. DO NOT FORCE. ONCE FULLY THREADED, APPLY SLIGHTLY MORE PRESSURE TO CONFIRM STABILITY. POSITION DEVICE ON TABLETOP STAND. (SEE IMAGE 5A)



**5B. FOR HOBKNOB KIT:** CONNECT HOBKNOB HANDLE TO DEVICE. (SEE IMAGE 5B)

**DO NOT USE THESE PRODUCTS ON SOFT, FLEXIBLE CASES. THESE CASES ARE NOT RIGID ENOUGH TO HOLD THE MAGNETIC SOCKETS.**

IN THE EVENT THAT YOU MUST USE A MAGNETIC SOCKET WITH A SOFT, FLEXIBLE CASE: REMOVE THE CASE FROM YOUR DEVICE, PLACE THE CASE ON A SOLID SURFACE AND CUT A HOLE IN THE CASE WHERE THE MAGNETIC SOCKET WILL BE APPLIED, THEN ADHERE MAGNETIC SOCKET DIRECTLY TO THE HARD SURFACE BELOW, THROUGH THE NEW HOLE IN CASE.



#### REMOVAL INSTRUCTIONS:

1. APPLY A FEW DROPS OF RUBBING ALCOHOL BETWEEN THE STEELIE COMPONENT AND THE SURFACE OR DEVICE IT HAS BEEN APPLIED TO IN ORDER TO BREAK THE ADHESIVE BOND.
2. CAREFULLY USE FISHING LINE OR DENTAL FLOSS IN A SAWING MOTION TO CUT FOAM AWAY FROM THE SURFACE OR DEVICE. (SEE ILLUSTRATION TO THE LEFT) USING YOUR FINGER, ROLL REMAINING ADHESIVE AWAY FROM APPLIED SURFACE.

**CAUTION!** USE OF SHARP EDGES TO REMOVE ADHESIVE IS NOT RECOMMENDED, AS IT MAY RESULT IN SCRATCHES OR DAMAGE TO DEVICES AND/OR OTHER SURFACES!

3. DO NOT RE-USE 3M ADHESIVE. NEW ADHESIVES CAN BE PURCHASED WITHIN A REINSTALL KIT AT [WWW.NITEIZE.COM](http://WWW.NITEIZE.COM).

### A REINSTALL KIT IS AVAILABLE FOR THE STEELIE PEDESTAL KITS AND HOBKNOB KIT.

TO REINSTALL, SIMPLY REMOVE ANY REMAINING ADHESIVE FROM THE INSTALLATION SITE, IF APPLICABLE. PLEASE ENSURE THAT ALL STEELIE KIT COMPONENTS ARE FREE OF RESIDUAL ADHESIVE. USING YOUR FINGER, ROLL REMAINING ADHESIVE AWAY FROM APPLIED SURFACE. CLEAN ALL SURFACES WITH THE INCLUDED ALCOHOL PAD BEFORE INSTALLING NEW 3M® VHB® FOAM ADHESIVE DISK TO THE CORRESPONDING MAGNETIC SOCKET. TO ENSURE SUCCESSFUL REINSTALL, PLEASE TAKE CARE TO CENTER THE 3M® VHB® FOAM ADHESIVE DISK ON THE CORRESPONDING MAGNETIC SOCKET.



MAGNETIC TABLET SOCKET ADHESIVE BACKING



MAGNETIC PHONE SOCKET ADHESIVE BACKING

ONCE SURFACES ARE CLEAN AND ADHESIVE HAS BEEN REINSTALLED, PLEASE REFER BACK TO STEP 1 OF THE MAGNETIC SOCKET INSTALLATION INSTRUCTIONS AND PROCEED THROUGH ALL INSTALLATION INSTRUCTIONS FOR EITHER THE PROPER PEDESTAL KIT OR THE HOBKNOB KIT.

### MAGNET WARNING—PLEASE READ

THE STEELIE CONTAINS A STRONG MAGNET. THE MAGNET WILL NOT DAMAGE PHONES OR TABLETS WITH SOLID STATE HARD DRIVES (INCLUDING IPHONES, IPADS, ETC.) AS APPLE HAS SHOWN WITH THE IPAD SMARTCOVERS.

HOWEVER, MAGNETS CAN DAMAGE SENSITIVE OBJECTS INCLUDING PACEMAKERS, COMPUTER HARD-DRIVES, FLOPPY DISKS, CREDIT CARDS, MAGNETIC I.D. CARDS, CASSETTE TAPES, VIDEO TAPES AND OTHER SIMILAR ITEMS. CERTAIN TELEVISIONS, VCRS, COMPUTER MONITORS AND OTHER CRT DISPLAYS MAY ALSO BE AFFECTED. NITE IZE ASSUMES NO LIABILITY FOR DAMAGE TO SUCH OBJECTS.

KEEP OUT OF REACH OF CHILDREN. MAGNETS CAN BE HARMFUL IF SWALLOWED.

**MAGNETIC ATTACHMENT IS SAFE FOR DEVICES, BUT MAY AFFECT THE USE OF ELECTRONIC STYLUS ACCESSORIES**